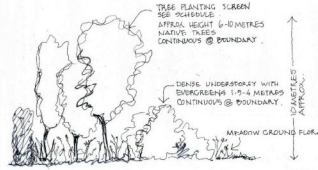


TREE PLANTING SPECIFICS (Numerical on drawing)

Tree No	Latin Name	Common Name	Speciation / Size	Nº of Trees
1	Chamaecyparis	Common Juniper	Spec. 100-120 cm	1
2	Sorbus domestica	Domestic Sorbus	Spec. 100-120 cm	1
3	Sorbus domestica	Domestic Sorbus	Spec. 100-120 cm	1
4	Sorbus domestica	Domestic Sorbus	Spec. 100-120 cm	1
5	Malus domestica	Domestic Malus	Spec. 100-120 cm	1
6	Sorbus domestica	Domestic Sorbus	Spec. 100-120 cm	1
7	Malus domestica	Domestic Malus	Spec. 100-120 cm	1
8	Malus domestica	Domestic Malus	Spec. 100-120 cm	1
9	Malus domestica	Domestic Malus	Spec. 100-120 cm	1
10	Malus domestica	Domestic Malus	Spec. 100-120 cm	1
11	Malus domestica	Domestic Malus	Spec. 100-120 cm	1
12	Malus domestica	Domestic Malus	Spec. 100-120 cm	1
13	Malus domestica	Domestic Malus	Spec. 100-120 cm	1
14	Malus domestica	Domestic Malus	Spec. 100-120 cm	1
15	Malus domestica	Domestic Malus	Spec. 100-120 cm	1
16	Malus domestica	Domestic Malus	Spec. 100-120 cm	1
17	Malus domestica	Domestic Malus	Spec. 100-120 cm	1
18	Malus domestica	Domestic Malus	Spec. 100-120 cm	1
19	Malus domestica	Domestic Malus	Spec. 100-120 cm	1
20	Malus domestica	Domestic Malus	Spec. 100-120 cm	1
21	Malus domestica	Domestic Malus	Spec. 100-120 cm	1
22	Malus domestica	Domestic Malus	Spec. 100-120 cm	1
23	Malus domestica	Domestic Malus	Spec. 100-120 cm	1
24	Malus domestica	Domestic Malus	Spec. 100-120 cm	1
25	Malus domestica	Domestic Malus	Spec. 100-120 cm	1
26	Malus domestica	Domestic Malus	Spec. 100-120 cm	1
27	Malus domestica	Domestic Malus	Spec. 100-120 cm	1
28	Malus domestica	Domestic Malus	Spec. 100-120 cm	1
29	Malus domestica	Domestic Malus	Spec. 100-120 cm	1
30	Malus domestica	Domestic Malus	Spec. 100-120 cm	1
31	Malus domestica	Domestic Malus	Spec. 100-120 cm	1
32	Malus domestica	Domestic Malus	Spec. 100-120 cm	1
33	Malus domestica	Domestic Malus	Spec. 100-120 cm	1
34	Malus domestica	Domestic Malus	Spec. 100-120 cm	1



UNDERSTOREY PLANTING (Ref: High Density Screening)

Small species: *Quercus robur* 40-60 cm x 1.1 15 No.
Quercus ilex 40-60 cm x 1.1 20 No.
Ulex europaeus 20-30 cm x 1.1 25 No.
Rosa canina 40-60 cm x 1.1 15 No.
Prunus spinosa 40-60 cm x 1.1 25 No.
Sambucus nigra 40-60 cm x 1.1 20 No.

All understorey shrubs planted at widest dimensions approx. 1-2 metres apart in drifts or solid masses of 5 plants.

All to be planted with a maximum weight cane x 60 cm spiral guard (cane) like *Arbutus unio* to be planted with a 60 cm spiral guard with 2 canes spaced to canopy with cable ties.

All plants / transplants not planted before start planting.

NATIVE HEDGE MIXTURE (HM1)

Plants to be planted in a double row Rows to be 300 mm apart

See plants per meter in an open spreadsheet on the plan.

All plants to be planted with a maximum weight cane and a 60 cm spiral guard (cane) like *Arbutus unio* to be planted with a 60 cm spiral guard with 2 canes spaced to canopy with cable ties.

Maximum to maintained hedge free as a 1 metre wide strip; the 'spacings' should be treated with a 100% system.

The agreement to take all steps to avoid spray drift going on to other nearby plants species.

Apply: August - April - May & August - September

Species:

<i>Chamaecyparis</i>	1.1	40-60 cm	15 No
<i>Larix</i>	1.1	40-60 cm	15 No
<i>Juniperus</i>	1.1	40-60 cm	15 No
<i>Thuja</i>	1.1	40-60 cm	15 No
<i>Podocarpus</i>	1.1	40-60 cm	15 No
<i>Abies</i>	1.1	40-60 cm	15 No
<i>Picea</i>	1.1	40-60 cm	15 No
<i>Pinus</i>	1.1	40-60 cm	15 No
<i>Taxus</i>	1.1	40-60 cm	15 No
<i>Calluna</i>	1.1	40-60 cm	15 No
<i>Erica</i>	1.1	40-60 cm	15 No
<i>Hebe</i>	1.1	40-60 cm	15 No
<i>Leucosiphon</i>	1.1	40-60 cm	15 No
<i>Phacelia</i>	1.1	40-60 cm	15 No
<i>Salvia</i>	1.1	40-60 cm	15 No
<i>Thymus</i>	1.1	40-60 cm	15 No
<i>Origanum</i>	1.1	40-60 cm	15 No
<i>Ulex</i>	1.1	40-60 cm	15 No
<i>Lotus</i>	1.1	40-60 cm	15 No
<i>Medicago</i>	1.1	40-60 cm	15 No
<i>Trifolium</i>	1.1	40-60 cm	15 No
<i>Anthyllus</i>	1.1	40-60 cm	15 No
<i>Ononis</i>	1.1	40-60 cm	15 No
<i>Asperula</i>	1.1	40-60 cm	15 No
<i>Stachys</i>	1.1	40-60 cm	15 No
<i>Phlomis</i>	1.1	40-60 cm	15 No
<i>Delphinium</i>	1.1	40-60 cm	15 No
<i>Verbena</i>	1.1	40-60 cm	15 No
<i>Salvia</i>	1.1	40-60 cm	15 No
<i>Thymus</i>	1.1	40-60 cm	15 No
<i>Origanum</i>	1.1	40-60 cm	15 No
<i>Ulex</i>	1.1	40-60 cm	15 No
<i>Lotus</i>	1.1	40-60 cm	15 No
<i>Medicago</i>	1.1	40-60 cm	15 No
<i>Trifolium</i>	1.1	40-60 cm	15 No
<i>Anthyllus</i>	1.1	40-60 cm	15 No
<i>Ononis</i>	1.1	40-60 cm	15 No
<i>Asperula</i>	1.1	40-60 cm	15 No
<i>Stachys</i>	1.1	40-60 cm	15 No
<i>Phlomis</i>	1.1	40-60 cm	15 No
<i>Delphinium</i>	1.1	40-60 cm	15 No
<i>Verbena</i>	1.1	40-60 cm	15 No
<i>Salvia</i>	1.1	40-60 cm	15 No
<i>Thymus</i>	1.1	40-60 cm	15 No
<i>Origanum</i>	1.1	40-60 cm	15 No
<i>Ulex</i>	1.1	40-60 cm	15 No
<i>Lotus</i>	1.1	40-60 cm	15 No
<i>Medicago</i>	1.1	40-60 cm	15 No
<i>Trifolium</i>	1.1	40-60 cm	15 No
<i>Anthyllus</i>	1.1	40-60 cm	15 No
<i>Ononis</i>	1.1	40-60 cm	15 No
<i>Asperula</i>	1.1	40-60 cm	15 No
<i>Stachys</i>	1.1	40-60 cm	15 No
<i>Phlomis</i>	1.1	40-60 cm	15 No
<i>Delphinium</i>	1.1	40-60 cm	15 No
<i>Verbena</i>	1.1	40-60 cm	15 No
<i>Salvia</i>	1.1	40-60 cm	15 No
<i>Thymus</i>	1.1	40-60 cm	15 No
<i>Origanum</i>	1.1	40-60 cm	15 No
<i>Ulex</i>	1.1	40-60 cm	15 No
<i>Lotus</i>	1.1	40-60 cm	15 No
<i>Medicago</i>	1.1	40-60 cm	15 No
<i>Trifolium</i>	1.1	40-60 cm	15 No
<i>Anthyllus</i>	1.1	40-60 cm	15 No
<i>Ononis</i>	1.1	40-60 cm	15 No
<i>Asperula</i>	1.1	40-60 cm	15 No
<i>Stachys</i>	1.1	40-60 cm	15 No
<i>Phlomis</i>	1.1	40-60 cm	15 No
<i>Delphinium</i>	1.1	40-60 cm	15 No
<i>Verbena</i>	1.1	40-60 cm	15 No
<i>Salvia</i>	1.1	40-60 cm	15 No
<i>Thymus</i>	1.1	40-60 cm	15 No
<i>Origanum</i>	1.1	40-60 cm	15 No
<i>Ulex</i>	1.1	40-60 cm	15 No
<i>Lotus</i>	1.1	40-60 cm	15 No
<i>Medicago</i>	1.1	40-60 cm	15 No
<i>Trifolium</i>	1.1	40-60 cm	15 No
<i>Anthyllus</i>	1.1	40-60 cm	15 No
<i>Ononis</i>	1.1	40-60 cm	15 No
<i>Asperula</i>	1.1	40-60 cm	15 No
<i>Stachys</i>	1.1	40-60 cm	15 No
<i>Phlomis</i>	1.1	40-60 cm	15 No
<i>Delphinium</i>	1.1	40-60 cm	15 No
<i>Verbena</i>	1.1	40-60 cm	15 No
<i>Salvia</i>	1.1	40-60 cm	15 No
<i>Thymus</i>	1.1	40-60 cm	15 No
<i>Origanum</i>	1.1	40-60 cm	15 No
<i>Ulex</i>	1.1	40-60 cm	15 No
<i>Lotus</i>	1.1	40-60 cm	15 No
<i>Medicago</i>	1.1	40-60 cm	15 No
<i>Trifolium</i>	1.1	40-60 cm	15 No
<i>Anthyllus</i>	1.1	40-60 cm	15 No
<i>Ononis</i>	1.1	40-60 cm	15 No
<i>Asperula</i>	1.1	40-60 cm	15 No
<i>Stachys</i>	1.1	40-60 cm	15 No
<i>Phlomis</i>	1.1	40-60 cm	15 No
<i>Delphinium</i>	1.1	40-60 cm	15 No
<i>Verbena</i>	1.1	40-60 cm	15 No
<i>Salvia</i>	1.1	40-60 cm	15 No
<i>Thymus</i>	1.1	40-60 cm	15 No
<i>Origanum</i>	1.1	40-60 cm	15 No
<i>Ulex</i>	1.1	40-60 cm	15 No
<i>Lotus</i>	1.1	40-60 cm	15 No
<i>Medicago</i>	1.1	40-60 cm	15 No
<i>Trifolium</i>	1.1	40-60 cm	15 No
<i>Anthyllus</i>	1.1	40-60 cm	15 No
<i>Ononis</i>	1.1	40-60 cm	15 No
<i>Asperula</i>	1.1	40-60 cm	15 No
<i>Stachys</i>	1.1	40-60 cm	15 No
<i>Phlomis</i>	1.1	40-60 cm	15 No
<i>Delphinium</i>	1.1	40-60 cm	15 No
<i>Verbena</i>	1.1	40-60 cm	15 No
<i>Salvia</i>	1.1	40-60 cm	15 No
<i>Thymus</i>	1.1	40-60 cm	15 No
<i>Origanum</i>	1.1	40-60 cm	15 No
<i>Ulex</i>	1.1	40-60 cm	15 No
<i>Lotus</i>	1.1	40-60 cm	15 No
<i>Medicago</i>	1.1	40-60 cm	15 No
<i>Trifolium</i>	1.1	40-60 cm	15 No
<i>Anthyllus</i>	1.1	40-60 cm	15 No
<i>Ononis</i>	1.1	40-60 cm	15 No
<i>Asperula</i>	1.1	40-60 cm	15 No
<i>Stachys</i>	1.1	40-60 cm	15 No
<i>Phlomis</i>	1.1	40-60 cm	15 No
<i>Delphinium</i>	1.1	40-60 cm	15 No
<i>Verbena</i>	1.1	40-60 cm	15 No
<i>Salvia</i>	1.1	40-60 cm	15 No
<i>Thymus</i>	1.1	40-60 cm	15 No
<i>Origanum</i>	1.1	40-60 cm	15 No
<i>Ulex</i>	1.1	40-60 cm	15 No
<i>Lotus</i>	1.1	40-60 cm	15 No
<i>Medicago</i>	1.1	40-60 cm	15 No
<i>Trifolium</i>	1.1	40-60 cm	15 No
<i>Anthyllus</i>	1.1	40-60 cm	15 No
<i>Ononis</i>	1.1	40-60 cm	15 No
<i>Asperula</i>	1.1	40-60 cm	15 No
<i>Stachys</i>	1.1	40-60 cm	15 No
<i>Phlomis</i>	1.1	40-60 cm	15 No
<i>Delphinium</i>	1.1	40-60 cm	15 No
<i>Verbena</i>	1.1	40-60 cm	15 No
<i>Salvia</i>	1.1	40-60 cm	15 No
<i>Thymus</i>	1.1	40-60 cm	15 No
<i>Origanum</i>	1.1	40-60 cm	15 No
<i>Ulex</i>	1.1	40-60 cm	15 No
<i>Lotus</i>	1.1	40-60 cm	15 No
<i>Medicago</i>	1.1	40-60 cm	15 No
<i>Trifolium</i>	1.1	40-60 cm	15 No
<i>Anthyllus</i>	1.1	40-60 cm	15 No
<i>Ononis</i>	1.1	40-60 cm	15 No
<i>Asperula</i>	1.1	40-60 cm	15 No
<i>Stachys</i>	1.1	40-60 cm	15 No
<i>Phlomis</i>	1.1	40-60 cm	15 No
<i>Delphinium</i>	1.1	40-60 cm	15 No
<i>Verbena</i>	1.1	40-60 cm	15 No
<i>Salvia</i>	1.1	40-60 cm	15 No
<i>Thymus</i>	1.1	40-60 cm	15 No
<i>Origanum</i>	1.1	40-60 cm	15 No
<i>Ulex</i>	1.1	40-60 cm	15 No
<i>Lotus</i>	1.1	40-60 cm	15 No
<i>Medicago</i>	1.1	40-60 cm	15 No
<i>Trifolium</i>	1.1	40-60 cm	15 No
<i>Anthyllus</i>	1.1	40-60 cm	15 No
<i>Ononis</i>	1.1	40-60 cm	15 No
<i>Asperula</i>	1.1	40-60 cm	15 No
<i>Stachys</i>	1.1	40-60 cm	15 No
<i>Phlomis</i>	1.1	40-60 cm	15 No
<i>Delphinium</i>	1.1	40-60 cm	15 No
<i>Verbena</i>	1.1	40-60 cm	15 No
<i>Salvia</i>	1.1	40-60 cm	15 No
<i>Thymus</i>	1.1	40-60 cm	15 No
<i>Origanum</i>	1.1	40-60 cm	15 No
<i>Ulex</i>	1.1	40-60 cm	15 No
<i>Lotus</i>	1.1	40-60 cm	15 No
<i>Medicago</i>	1.1	40-60 cm	15 No
<i>Trifolium</i>	1.1	40-60 cm	15 No
<i>Anthyllus</i>	1.1	40-60 cm	15 No
<i>Ononis</i>	1.1	40-60 cm	15 No
<i>Asperula</i>	1.1	40-60 cm	15 No
<i>Stachys</i>	1.1	40-60 cm	15 No
<i>Phlomis</i>	1.1	40-60 cm	15 No
<i>Delphinium</i>	1.1	40-60 cm	15 No
<i>Verbena</i>	1.1	40-60 cm	15 No
<i>Salvia</i>	1.1	40-60 cm	15 No
<i>Thymus</i>	1.1	40-60 cm	15 No
<i>Origanum</i>	1.1	40-60 cm	15 No
<i>Ulex</i>	1.1	40-60 cm	15 No
<i>Lotus</i>	1.1	40-60 cm	15 No
<i>Medicago</i>	1.1	40-60 cm	15 No
<i>Trifolium</i>	1.1	40-60 cm	15 No
<i>Anthyllus</i>	1.1	40-60 cm	15 No
<i>Ononis</i>	1.1	40-60 cm	15 No
<i>Asperula</i>	1.1	40-60 cm	15 No
<i>Stachys</i>	1.1	40-60 cm	15 No
<i>Phlomis</i>	1.1	40-60 cm	15 No
<i>Delphinium</i>	1.1	40-60 cm	15 No
<i>Verbena</i>	1.1	40-60 cm	15 No
<i>Salvia</i>	1.1	40-60 cm	15 No
<i>Thymus</i>	1.1	40-60 cm	15 No
<i>Origanum</i>	1.1	40-60 cm	15 No
<i>Ulex</i>	1.1	40-60 cm	15 No
<i>Lotus</i>	1.1	40-60 cm	15 No
<i>Medicago</i>	1.1	40-60 cm	15 No
<i>Trifolium</i>	1.1	40-60 cm	15 No
<i>Anthyllus</i>	1.1	40-60 cm	15 No
<i>Ononis</i>	1.1	40-60 cm	15 No
<i>Asperula</i>	1.1	40-60 cm	15 No
<i>Stachys</i>	1.1	40-60 cm	15 No
<i>Phlomis</i>	1.1	40-60 cm	15 No
<i>Delphinium</i>	1.1	40-60 cm	15 No
<i>Verbena</i>	1.1	40-60 cm	15 No
<i>Salvia</i>	1.1	40-60 cm	15 No
<i>Thymus</i>	1.1	40-60 cm	15 No
<i>Origanum</i>	1.1	40-60 cm	15 No
<i>Ulex</i>	1.1	40-60 cm	15 No
<i>Lotus</i>	1.1	40-60 cm	15 No
<i>Medicago</i>	1.1	40-60 cm	15 No
<i>Trifolium</i>	1.1	40-60 cm	15 No
<i>Anthyllus</i>	1.1	40-60 cm	15 No
<i>Ononis</i>	1.1	40-60 cm	15 No
<i>Asperula</i>	1.1	40-60 cm	15 No
<i>Stachys</i>	1.1	40-60 cm	15 No
<i>Phlomis</i>	1.1		



THIS COPY HAS BEEN MADE BY OR WITH THE AUTHORITY OF BRISTOL DISTRICT COUNCIL PURSUANT TO SECTION 46 OF THE COPYRIGHT, DESIGN AND PATENTS ACT 1988. UNLESS THAT ACT PROVIDES A RELEVANT EXCEPTION TO COPYRIGHT, THIS COPY MUST NOT BE COPIED WITHOUT THE WRITTEN PERMISSION OF THE COPYRIGHT OWNER.

Rev.	Drawn	Checked	Issue	Revision
STONE & BEAN ASSOCIATES INCORPORATED IN ENGLAND				
The Studio, The Studio Street, Moulton, Northampton, NN3 7JL				
Tel: 01603 733000 Email: info@stoneandbean.co.uk www.stoneandbean.co.uk				
Proposed Reception Building & Carpark Moorland Trout Farms, Avening Road, Moorland Trout Farms, NN3 7JL				
Client: Moorland Trout Farms Site: Site as existing				
Scale:	1:500	Date:	11 Dec 14	Drawn:
Author:	SB	Checked:	SB	
© Stone & Bean Associates Ltd. All Rights Reserved. This is a confidential document. It is not to be used for any other purpose without the written consent of Stone & Bean Associates Ltd.				
Job No:	4258	Project No:	A950	Sheet No:
				AT



DATE VALID
18/10/15

